

MOVE OVER!

ON ROADS WITH TWO OR MORE LANES OF TRAVEL IN THE SAME DIRECTION

- When approaching a stationary emergency vehicle with its emergency lights activated carefully move over into an open lane.
- If this is not possible due to traffic, weather, or road conditions, slow down and pass with caution, allowing the emergency vehicle as much space as possible.

ON ROADS WITH ONE LANE OF TRAVEL IN EACH DIRECTION

- When approaching a stationary emergency vehicle with its emergency lights activated carefully move over into an open adjacent lane.
- If this is not possible due to traffic, weather, or road conditions, slow down and pass with caution, allowing the emergency vehicle as much space as possible.

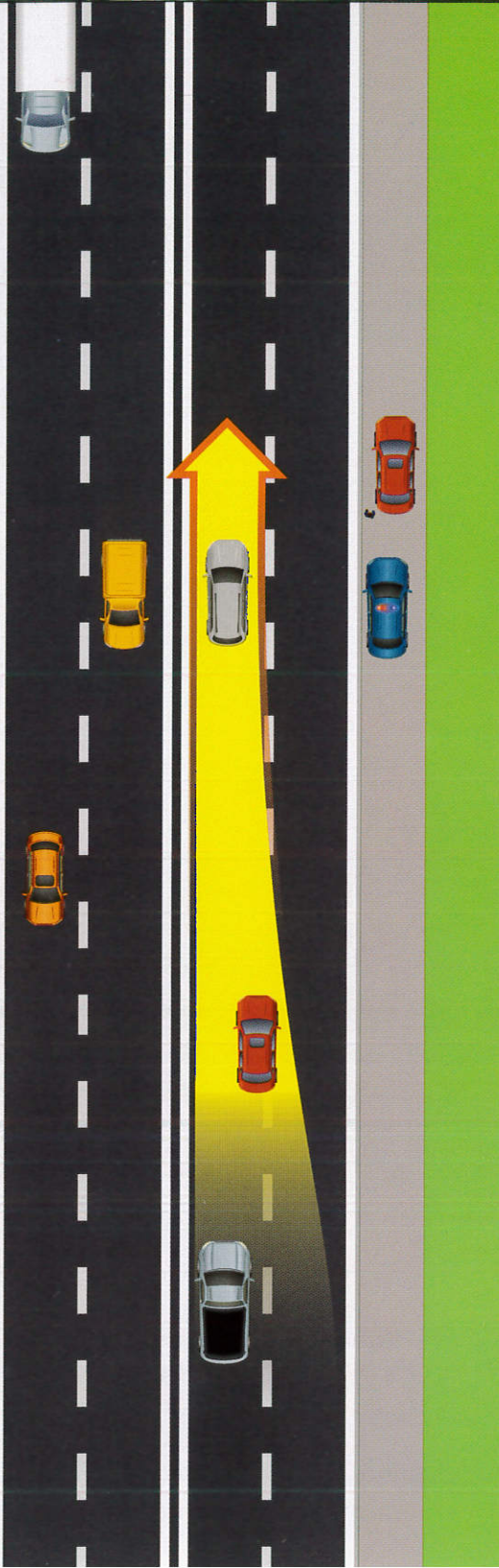
MICHIGAN'S EMERGENCY VEHICLE CAUTION LAW

Michigan's Emergency Vehicle Caution Law, more commonly known as the Move Over Law, requires motorists to move over for stationary emergency vehicles with their lights activated or slow down and pass with caution if it is not possible to safely change lanes.

The law applies to the following vehicles:

- Police
- Fire
- Rescue
- Ambulance
- Road Service

Road service vehicles include tow trucks and courtesy vehicles operated by the Michigan Department of Transportation.



FREQUENTLY ASKED QUESTIONS

Q.

If I am on a two-lane road and see a police car on the shoulder and a car is traveling in the opposite direction, what am I supposed to do?

A.

If it is not safe for you to move over into an adjacent lane, then you must slow down and pass with caution, giving the emergency vehicle as much room as possible.

Q.

Do I have to move over for a tow truck?

A.

Yes, road service vehicles, including tow trucks, are considered to be emergency vehicles under this law.

Q.

If I see an emergency vehicle on the side of the road and it doesn't have its emergency lights activated, do I have to move over?

A.

No, you do not have to move over if the emergency vehicle doesn't have its emergency lights activated. However, you should always pass with caution, giving the emergency vehicles as much space as possible.

